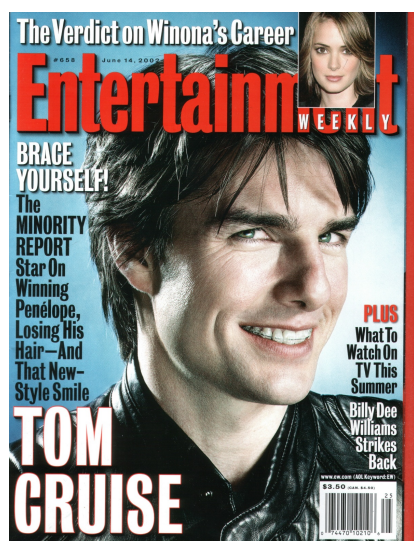
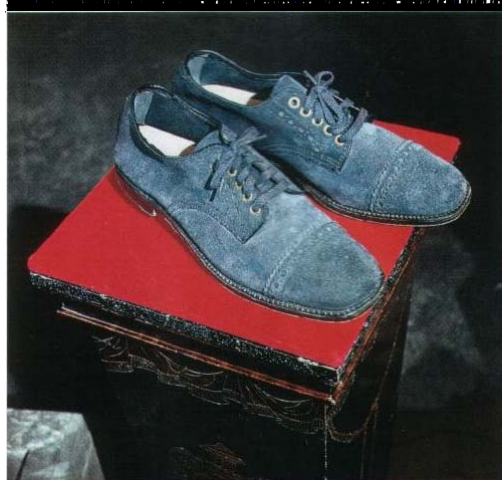


# Entertainment Weekly

14 juin 2002/June 14, 2002

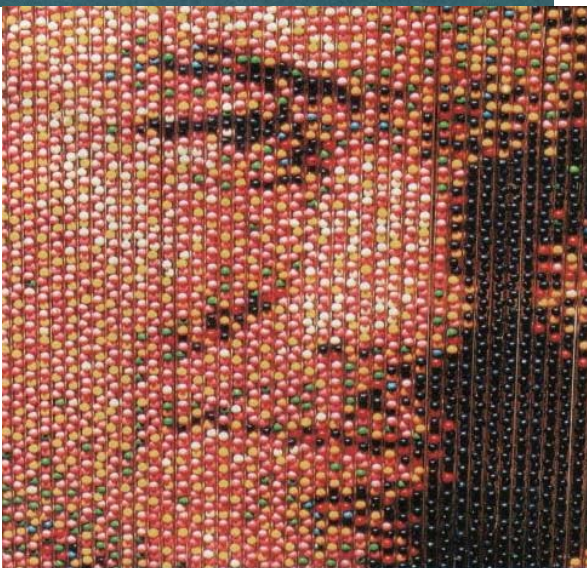




**1 FOOT FETISH** Lace-ups may seem a tad ordinary next to a castration kit or a headless rooster, but these are the King's very own blue suede shoes (on loan from Graceland). Jbara hopes to see Cain strut in them when the footwear is featured on the show, but the host is not so sure. "I don't know what size Elvis wore," says the ex-Princeton football star. "but I've got a funny feeling I've got bigger dogs."



**2** **HEAD GAMES** "Ripley has the largest collection of real shrunken heads in the world," boasts Jbara. Based on ancient African traditions, tribesmen would swipe an enemy's skull, remove and boil the skin, and fill the cavity with hot rocks and sand. "I could almost do the process [myself]," says Cain, reflecting on how many he's seen. "I have more ridiculous facts and pieces of knowledge in my head—it's hysterical."



**3** **POP ART** When *Ripley's* featured oddball artist Franz Spohn, who crafts large-scale murals out of gumballs, they commissioned him to re-create Cain for the show. It took three people and 10,400 pieces of the chewy stuff to assemble the 6' x 6' likeness. "It drives Dean crazy that this big portrait of himself is staring back at him," says Jbara. Adds Cain, "It's like, 'Get that giant head outta my face!'"





4

**DISARMING DISCOVERY** Jbara calls this petrified arm of Claude De Lorraine "one of the creepiest items to date."

The French nobleman severed his limb in 1918 by punching a window when his opera-singer wife fell off stage and died. If you think that's weird, the *Ripley's* set once featured a serial killer's preserved head. "We have stuff all of the time where I go, 'What?'" says Cain. "That's why we put it on the show."